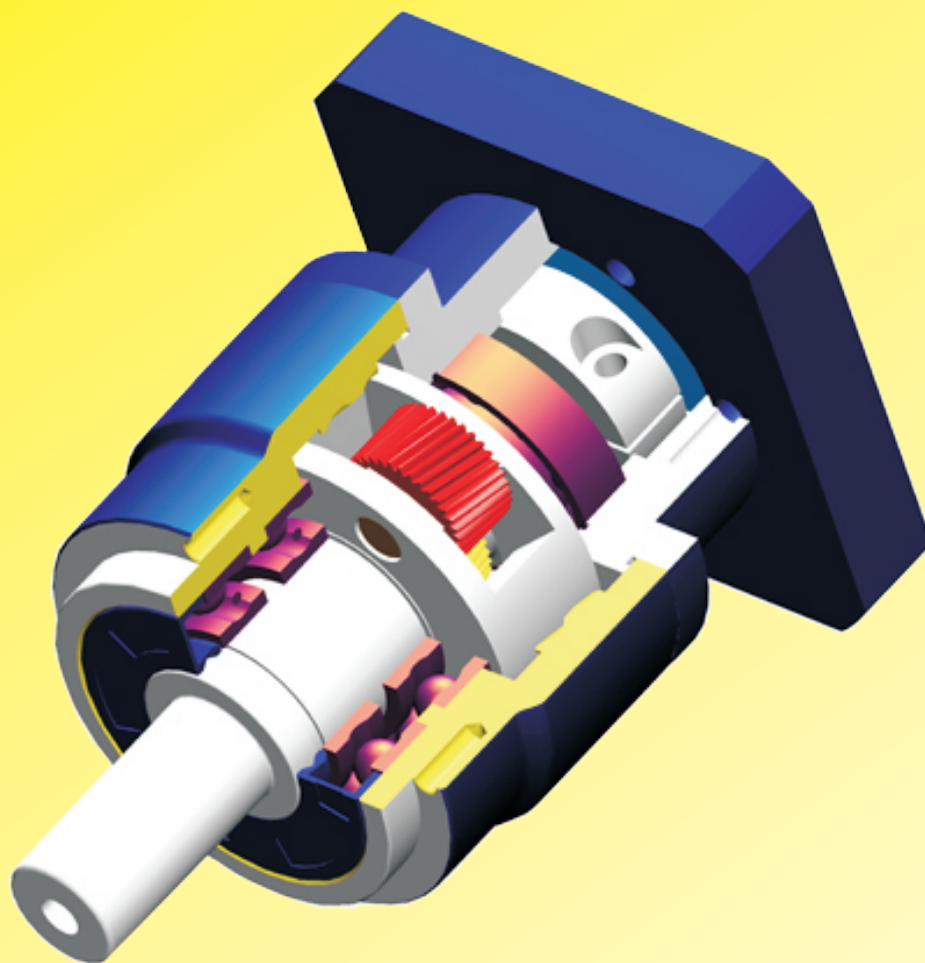


VRL系列行星减速机

VRL series planetary reducer

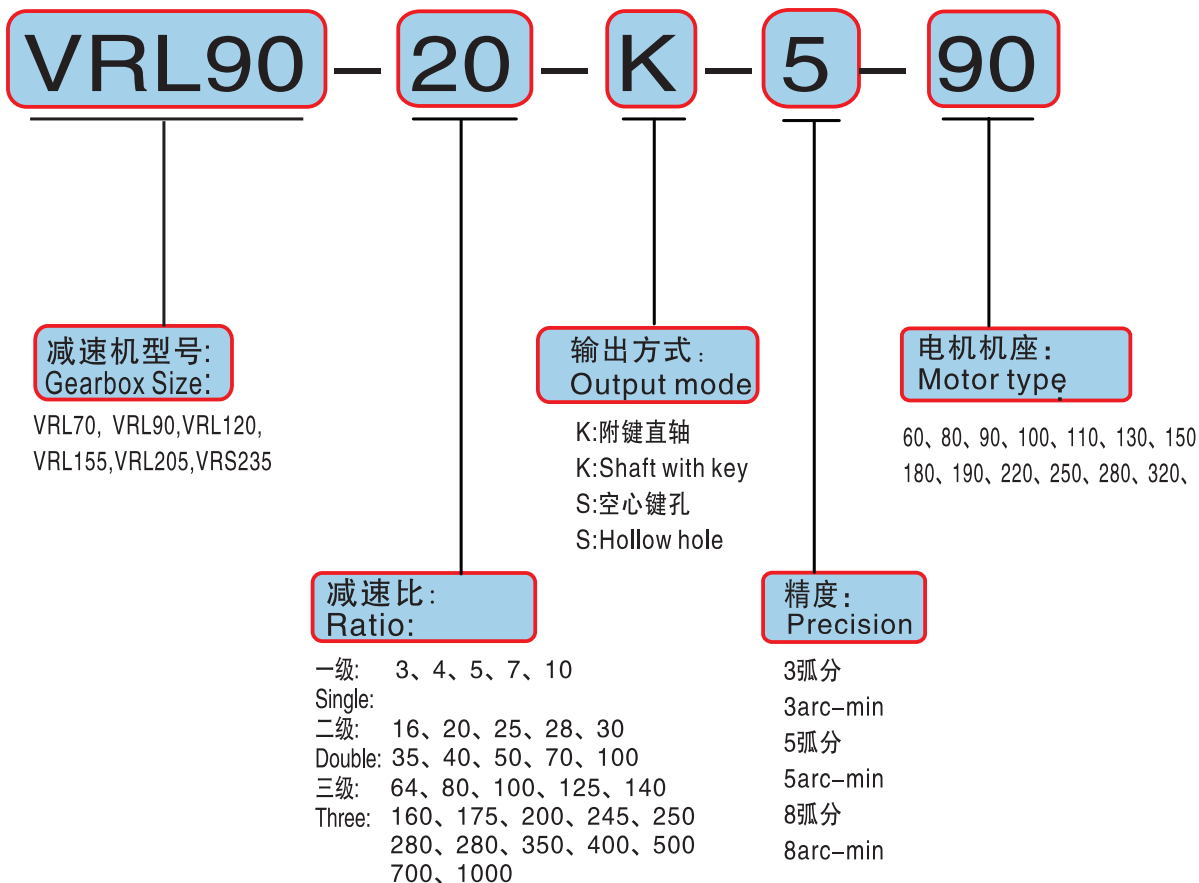


产品特点：高精度、承载力大、速比多、寿命长、噪音小、免维护。
Product features: High precision, high bearing capacity, high speed ratio, Long life, low noise, maintenance free.

输入种类：交流伺服马达、直流伺服马达、步进马达。
Type: AC servo motor, DC servo motor, stepping motor.

应用领域：机床、军工、新能源设备、工业机器人、印刷设备、自动组装线、等高精度场合的应用。
Application fields: Machine tools, military industry, new energy equipment, industrial robots, printing equipment, automatic assembly line, And other high precision applications.

订货型号表示： Ordering representation



减速机工况应用选择表 Application selection of gear reducer						
		使用系数(fs) Use coefficient(fs)				
负载类型 Load type	每小时启动次数Z Start times per hour Z	每日运行时间(h) Daily running time(h)				
		h≤4	4≤h≤8	8≤h≤12	12≤h≤16	16≤h≤24
平稳负载 Steady load	Z≤10	0.9	1.0	1.1	1.4	1.8
	10≤Z≤30	1.0	1.2	1.3	1.6	2.0
	30≤Z≤100	1.2	1.4	1.5	1.8	2.2
中等冲击负载 Medium impact load	Z≤10	1.2	1.4	1.5	1.8	2.2
	10≤Z≤30	1.4	1.6	1.65	2.0	2.5
	30≤Z≤100	1.6	1.8	2.0	2.2	2.8
冲击重载 Shock Overload	Z≤10	1.6	1.8	2.0	2.2	2.8
	10≤Z≤30	1.8	2.0	2.2	2.4	3.0
	30≤Z≤100	2.0	2.3	2.5	2.7	3.3

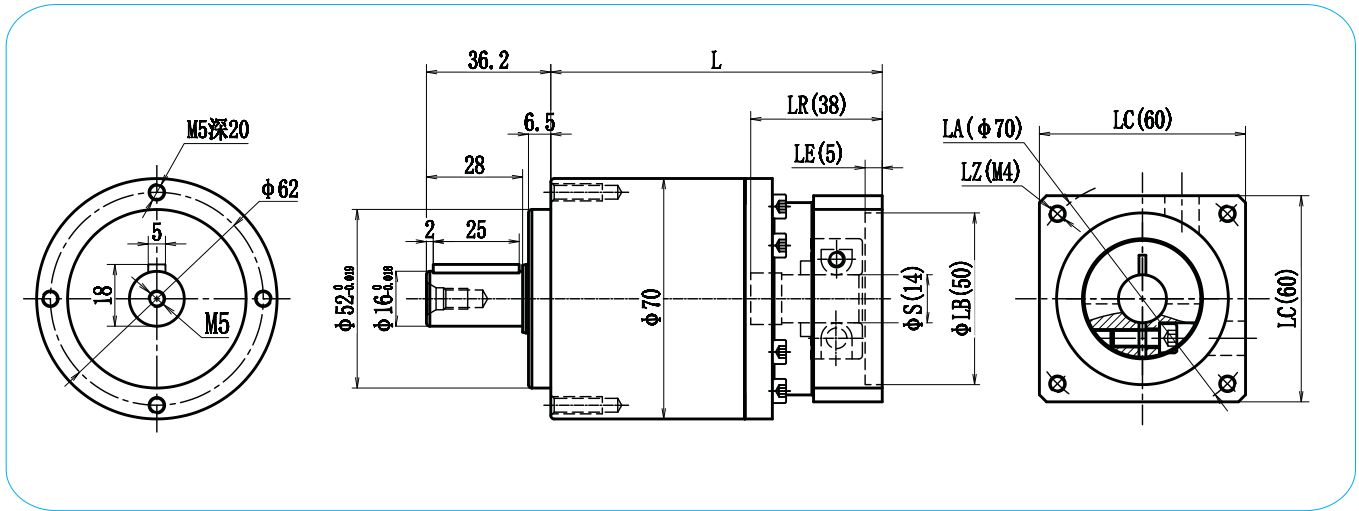
注：输出惯性大时,请加大一个型号选用；连续运转时工作寿命将降低一半。
Note: The output inertia is large, please increase the selection of a model;
Continuous operation working life will be reduced by half.

减速机性能参数 Gear performance parameters

规格 Specifications	单位 Unit	级数 Series	速比 Ratio	VRL70	VRL90	VRL120	VRL155	VRL205	VRL235
额定承受扭矩 T2N Rated torque	Nm	L1	3	28	130	240	450	1100	1750
			4	52	165	320	650	1650	2650
			5	52	165	320	650	1650	2650
			7	36	120	210	500	1250	1850
			10	18	75	165	320	700	1150
		L2	9	28	130	240	450	1100	1750
			12	28	130	240	450	1100	1750
			15	28	130	240	450	1100	1750
			16	52	165	320	650	1650	2650
			20	52	165	320	650	1650	2650
			25	52	165	320	650	1650	2650
			28	52	165	320	650	1650	2650
			30	28	130	240	450	1100	1750
			35	52	165	320	650	1650	2650
			40	52	165	320	650	1650	2650
			50	52	165	320	650	1650	2650
			70	36	120	210	500	1250	1850
			100	18	75	165	320	700	1150
		L3	64	52	165	320	650	1650	2650
			80	52	165	320	650	1650	2650
			100	52	165	320	650	1650	2650
			125	52	165	320	650	1650	2650
			150	52	165	320	650	1650	2650
			160	52	165	320	650	1650	2650
			175	52	165	320	650	1650	2650
			200	52	165	320	650	1650	2650
			250	52	165	320	650	1650	2650
			280	52	165	320	650	1650	2650
			300	28	130	240	450	1100	1750
			350	52	165	320	650	1650	2650
			400	52	165	320	650	1650	2650
			500	52	165	320	650	1650	2650
			700	38	120	210	500	1250	1850
1000	18	75	165	320	700	1150			
最大承受扭矩T2B Maximum torque T2B	Nm	L1 L2 L3	3-1000	2.0倍额定输出扭矩 2.0 times the rated output torque					
额定输入转数n1N Rated speed n1N	R/min	L1 L2 L3	3-1000	3000	3000	3000	2000	2000	2000
背隙 Back clearance	arcmin	L1	3-10	≤3	≤3	≤3	≤3	≤3	≤3
		L2	12-100	≤5	≤5	≤5	≤5	≤5	≤5
		L3	64-1000	≤8	≤8	≤8	≤8	≤8	≤8
容许径向力F1 Allowable radial force	N	L1 L2 L3	3-1000	500	800	1000	3000	5000	8000
容许轴向力F2 Allowable axial force	N	L1 L2 L3	3-1000	300	500	800	2000	8000	15000
效率 η Efficiency	%	L1	3-10	97%	97%	97%	97%	97%	97%
		L2	9-100	94%	94%	94%	94%	94%	94%
		L3	64-1000	91%	91%	91%	91%	91%	91%
重量 Weight	kg	L1	3-10	1.2	3.5	7.0	15.0	26.0	46.0
		L2	9-100	1.5	4.5	9.0	19.0	30.0	59.0
		L3	64-1000	1.8	5.5	11.0	23.0	35.0	70.0
噪音 Noise	DB	L1 L2 L3	3-1000	≤55	≤55	≤60	≤65	≤70	≤70

VRL70外形图

VRL70 Appearance Figure

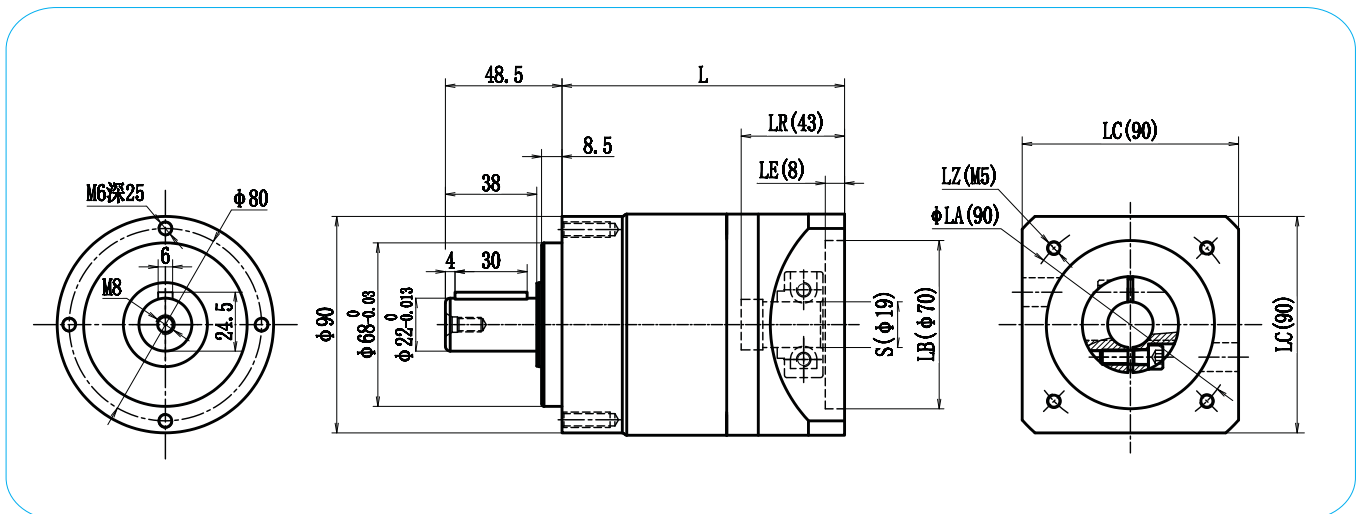


电机机座 Motor frame	LA	LZ	S	LB	LR	LE	LC	级数 Series		
								L1	L2	L3
40	45	4-M3	8	30	25	5	40	97	120	143
60	70	4-M4	11/14	50	30	5	60	97	120	143



VRL90外形图

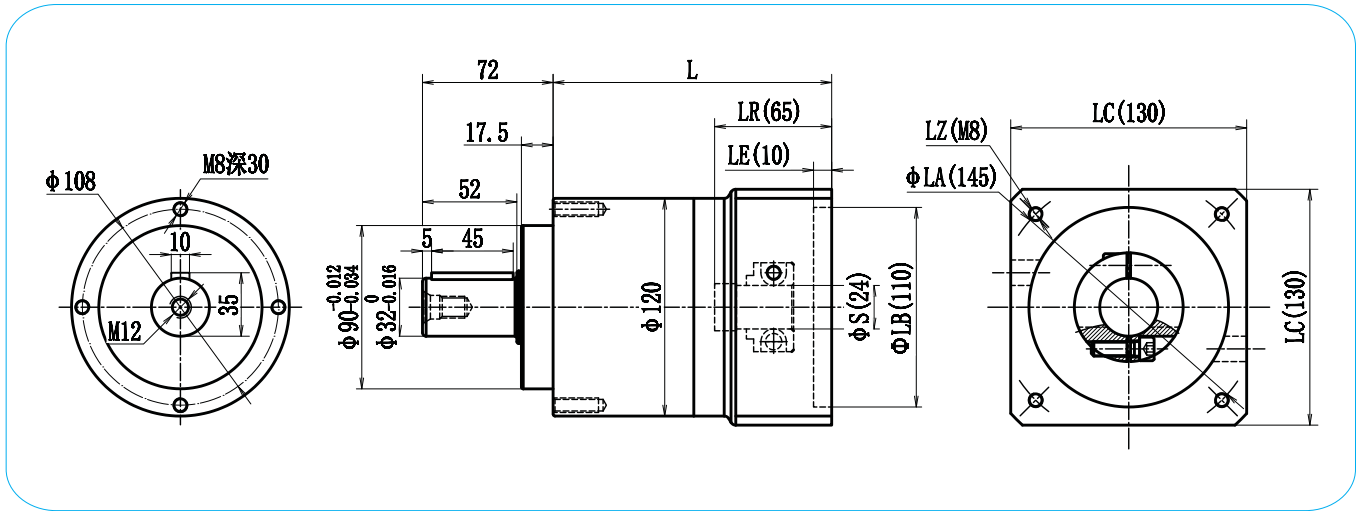
VRL90 Appearance Figure



电机机座 Motor frame	LA	LZ	S	LB	LR	LE	LC	级数 Series		
								L1	L2	L3
60	70	4-M4	11/14	50	30	5	60	118	148	178
80	90	4-M5	19	70	35	5	80	118	148	178
90	100	4-M6	16/19	80	35	5	90	118	148	178

VRL120外形图

VRL120 Appearance Figure

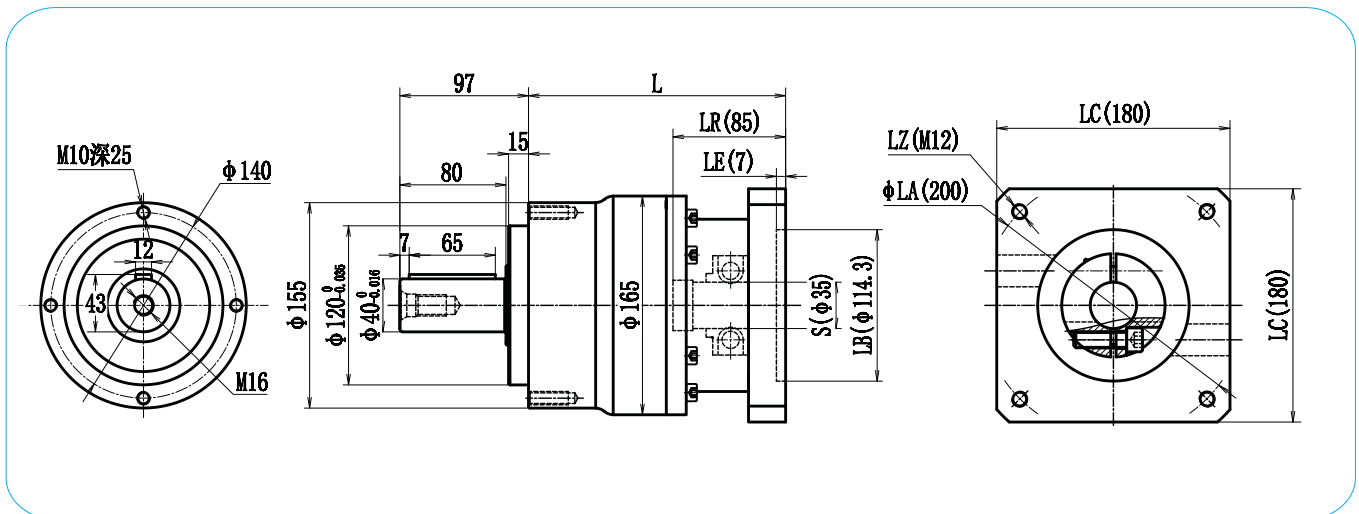


电机机座 Motor frame	LA	LZ	S	LB	LR	LE	LC	级数 Series		
								L1	L2	L3
100	115	4-M8	19/22	95	55	8	100	152	192	232
110	130	4-M8	22	110	55	8	110	152	192	232
130	145	4-M8	22/24	110	65	10	130	152	192	232



VRL155外形图

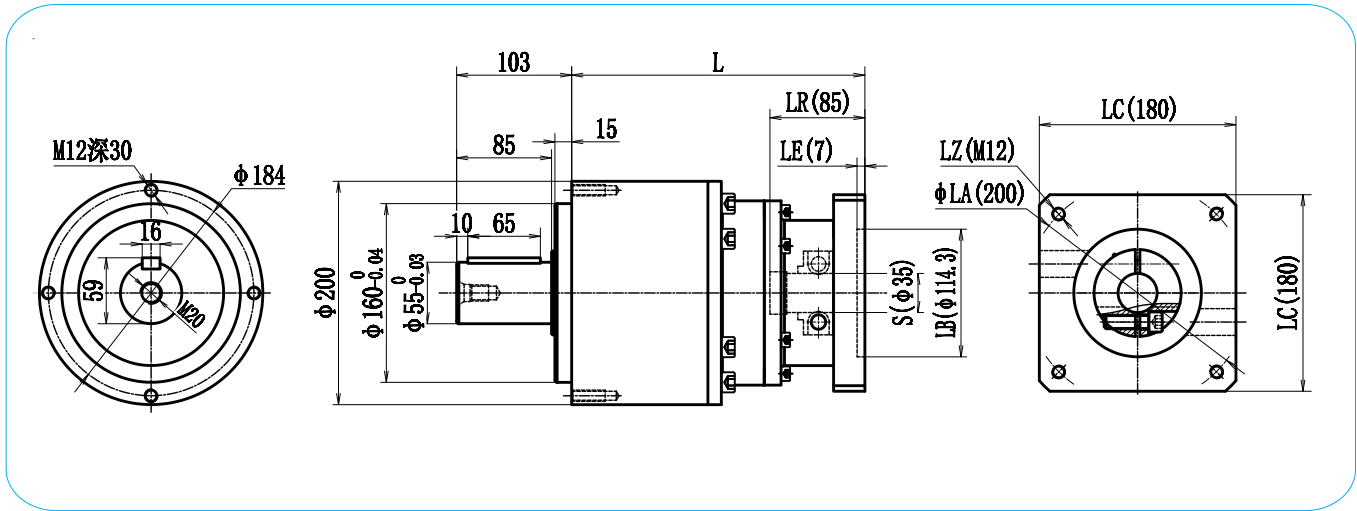
VRL155 Appearance Figure



电机机座 Motor frame	LA	LZ	S	LB	LR	LE	LC	级数 Series		
								L1	L2	L3
130	145	4-M8	22/24	110	65	10	130	194	242	290
150	165	4-M10	28/32	130	65	10	150	194	242	290
180	200	4-M12	35	114.3	80	10	180	194	242	290

VRL205外形图

VRL205 Appearance Figure

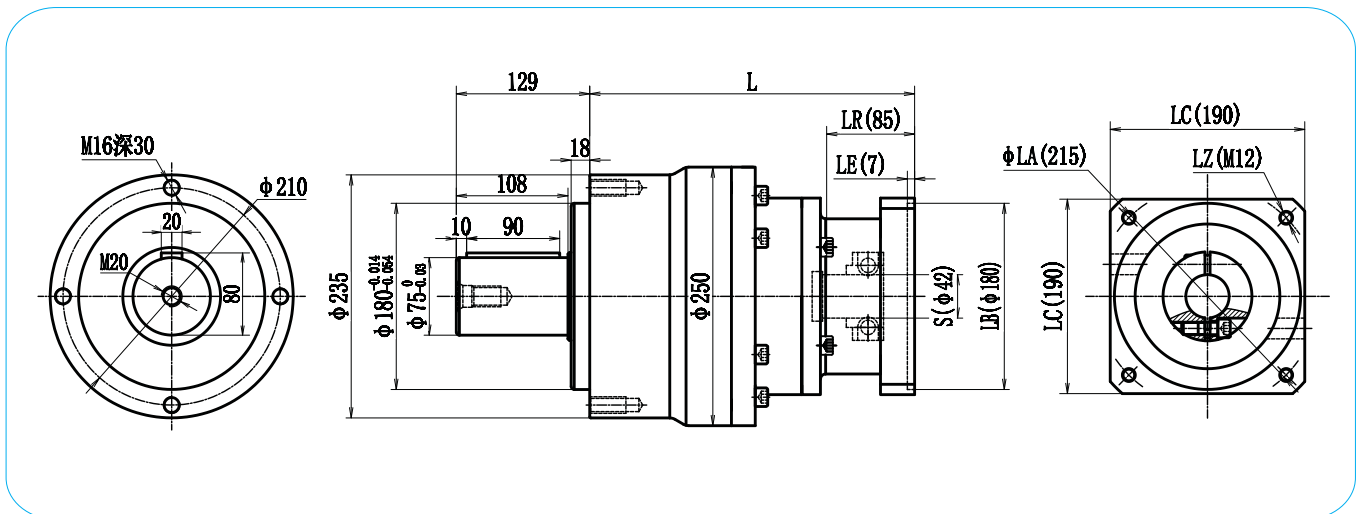


电机机座 Motor frame	LA	LZ	S	LB	LR	LE	LC	级数 Series		
								L1	L2	L3
150	165	4-M10	28/32	130	65	10	150	231	262	310
180	200	4-M12	35/42	114.3	80/114	10	180	231	262	310
190	215	4-M12	42/38	180	80	10	190	231	262	310



VRL235外形图

VRL235 Appearance Figure



电机机座 Motor frame	LA	LZ	S	LB	LR	LE	LC	级数 Series		
								L1	L2	L3
180	200	4-M12	35/42	114.3	80/114	10	180	238	308	340
190	215	4-M12	42/38	180	80	10	190	238	308	340
220	235	4-M12	55	200	110	10	220	275	343	---